

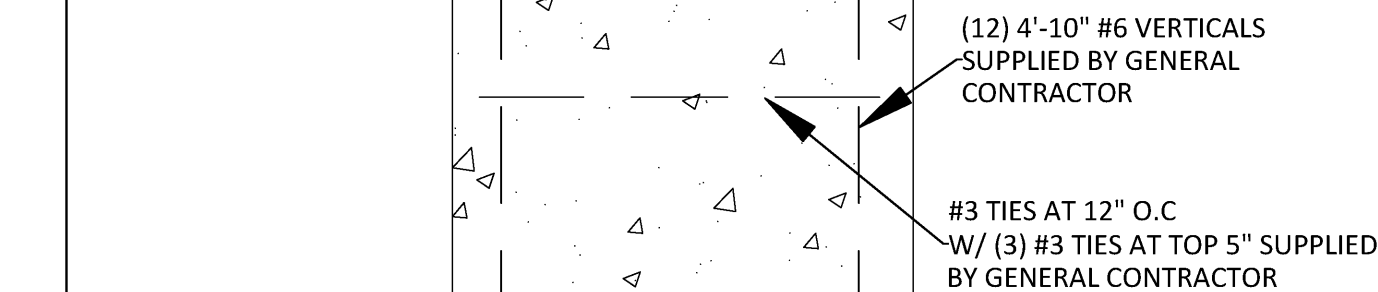
N/A

NON-ILLUMINATED CLEARANCE
SIGN WITH SPRING LOADED
BREAK AWAY CLEARANCE ARM

ADJUSTABLE HANGING BAR



- TOP OF PIERS SHALL BE SLOPED SUCH THAT MOISTURE CANNOT ACCUMULATE.
- ELECTRICAL CONTRACTOR TO PROVIDE INFORMATION ON CONDUIT AND ELECTRICAL REQUIREMENTS.
- MINIMUM ALLOWABLE LATERAL SOIL BEARING PRESSURE 100 PSF/FT OF DEPTH x2
- TOP 6" OF SOIL NEGLECTED IN EMBEDMENT DEPTH CALCULATIONS (EMBEDMENT DEPTHS SHOWN ARE FROM GRADE)
- 3" MIN. CONCRETE COVER FOR REINFORCEMENT



A

4-F72T12 CW/HO

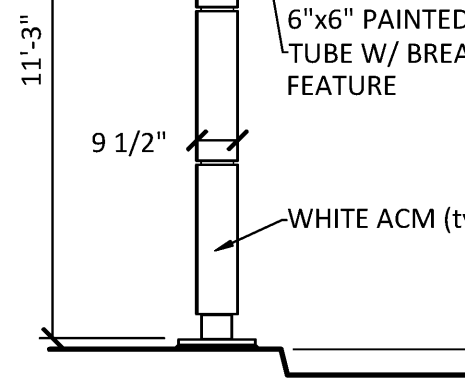
15 AMP, 120 VOLT

FULHAM WORKHORSE 7

1300 LBS.

SPRING LOADED SWING AWAY
9' CLEARANCE ARM.

ILLUMINATED AWNING PROVIDES
A CUSTOMER SAFE
ENVIRONMENT AT NIGHT AND
PROTECTION FROM INCLEMENT
WEATHER.



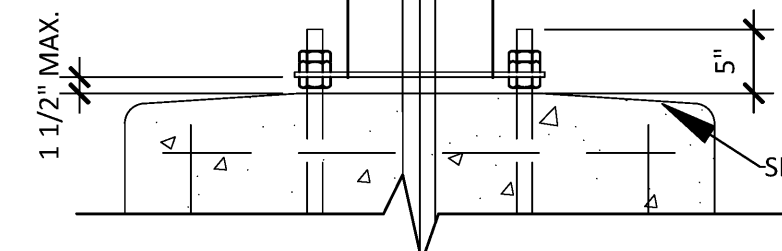
(A)

- TOP OF PIERS SHALL BE SLOPED SUCH THAT MOISTURE CANNOT ACCUMULATE
- HOT DIPPED GALVANIZED BOLTS
- F1554 GRADE 36 ANCHOR BOLTS
- ANCHOR BOLTS TO BE SET IN ACCORDANCE WITH AISC CODE OF STANDARD PRACTICE
- ANCHOR RODS, NUTS, AND WASHERS SHALL BE SHIPPED AS AN ASSEMBLY FROM THE SIGN/LIGHTING MANUFACTURER
- DO NOT CUT ANCHOR BOLTS AFTER INSTALLATION OF POLE



B

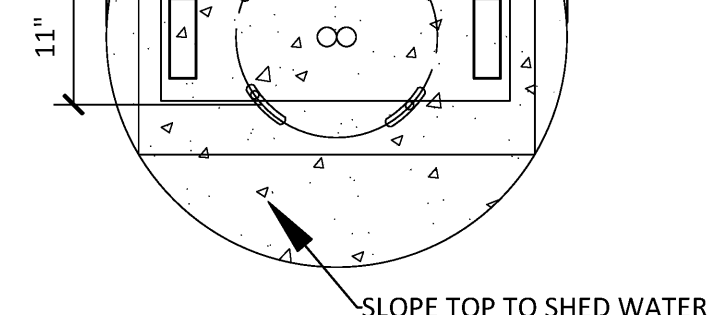
NOTES:
-TOP OF PIERS SHALL BE SLOPED SUCH THAT MOISTURE CANNOT ACCUMULATE.
-ANCHOR RODS, NUTS, AND WASHERS SHALL BE SHIPPED AS AN ASSEMBLY FROM THE SIGN/LIGHTING MANUFACTURER
-DO NOT CUT ANCHOR BOLTS AFTER INSTALLATION OF POLE



©

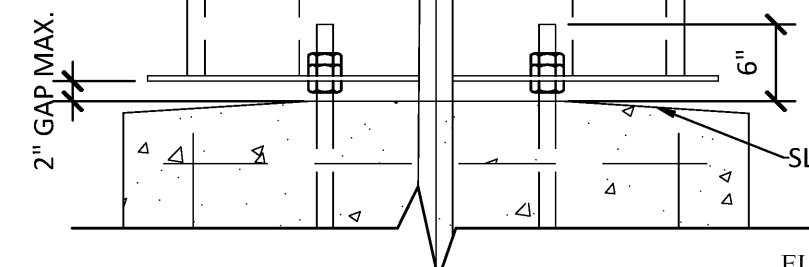
NOTES:

- TOP OF PIERS SHALL BE SLOPED SUCH THAT MOISTURE CANNOT ACCUMULATE
- USE F1554 GRADE 36 BOLTS MINIMUM
- ANCHOR BOLTS TO BE SET IN ACCORDANCE WITH AISI CODE OF STANDARD PRACTICE
- ANCHOR RODS, NUTS, AND WASHERS SHALL BE SHIPPED AS AN ASSEMBLY FROM THE SIGN/LIGHTING MANUFACTURER
- DO NOT CUT ANCHOR BOLTS AFTER INSTALLATION OF POLE




B

NOTES:
-TOP OF PIERS SHALL BE SLOPED SUCH THAT MOISTURE
CANNOT ACCUMULATE
-ANCHOR RODS, NUTS, AND WASHERS SHALL BE SHIPPED
AS AN ASSEMBLY FROM THE SIGN/LIGHTING
MANUFACTURER
-DO NOT CUT ANCHOR BOLTS AFTER INSTALLATION OF
POLE



ELITE CONSTRUCTION GROUP
LAKE JACKSON, TX
PHONE: 979-285-0712
NOTE: THESE PRINTS HAVE BEEN
REDUCED BY 50 PERCENT. SCALE
WILL BE 50 PERCENT OF WHAT IS
NOTED ON PLANS

PREPARED BY:

 **crosspoint**
engineering

5620 Old Bullard Road, Suite 130 | Tyler, Texas 75703
903 705 4416 | Tennessee Firm License # 5270
cp-engr.com

PREPARED FOR: © 2015 McDonald's USA, LLC

 **McDonald's USA, LLC**

These drawings and specifications are the confidential and proprietary property of McDonald's USA, LLC and shall not be copied or reproduced without written authorization. The contract documents were prepared for use on this specific project in conjunction with its issue date and are not suitable for use on a different site at a later time. Use of these drawings for reference or example on another project of the contract documents for reuse on another project is not authorized.

DRAWN BY CO	SCALE NTS	REVIEWED BY CO	DATE ISSUED 4/28/2017	PROJECT NUMBER 16-1507-19
----------------	--------------	-------------------	--------------------------	------------------------------

TITLE	SITE DETAILS		
PROJECT ADDRESS:	21320 TN-22 PARKERS CROSSROADS, TENNESSEE 38388		
STATE CODE:	041-0760	PROJECT DESCRIPTION:	MRP

SHEET NO. C6.3